



What is a Transition Town?

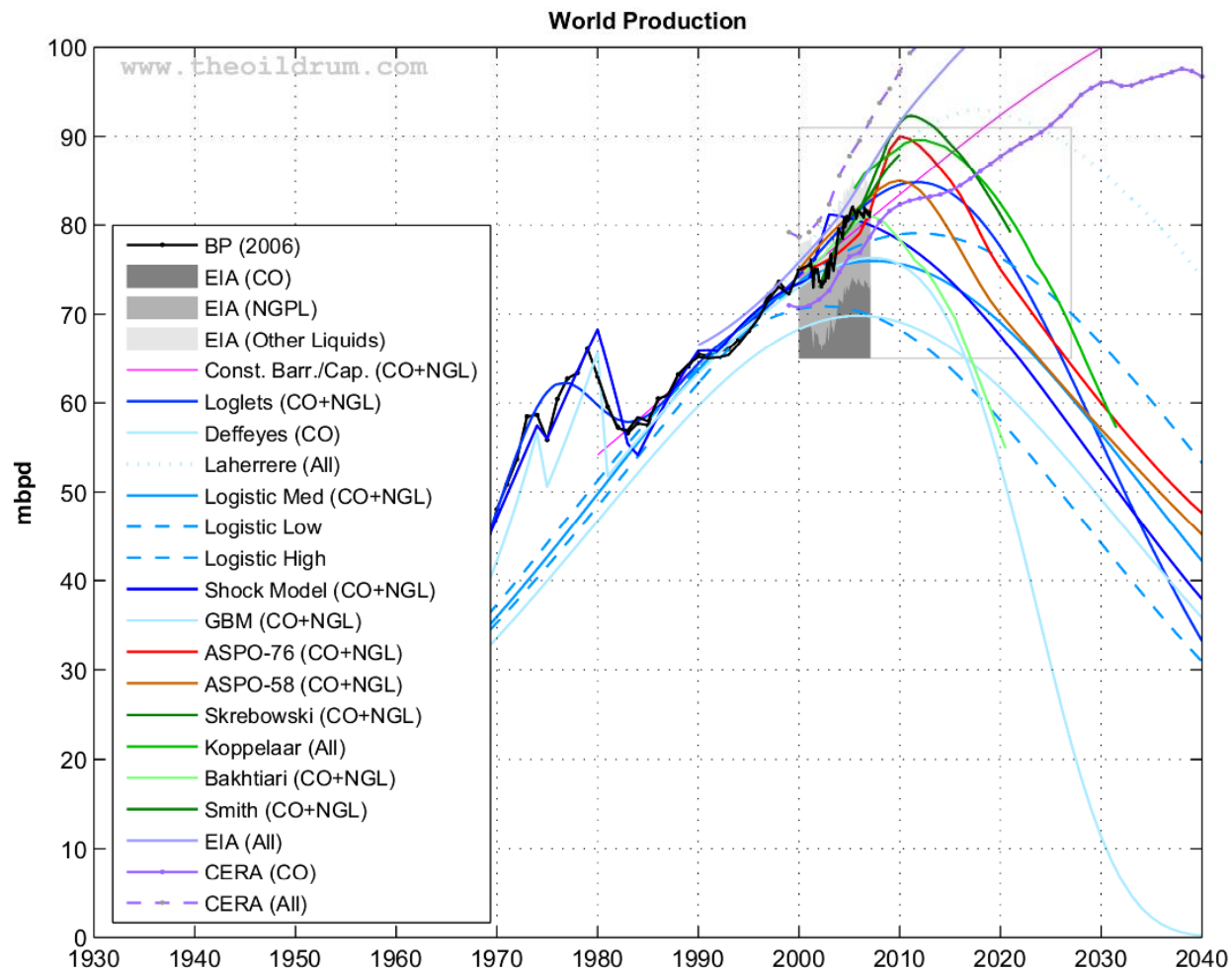
A community which is working to:

- Address the two great challenges of Climate Change and Peak Oil.
- Become more sustainable.
- Make the transition away from fossil fuel dependence.

What is Peak Oil?

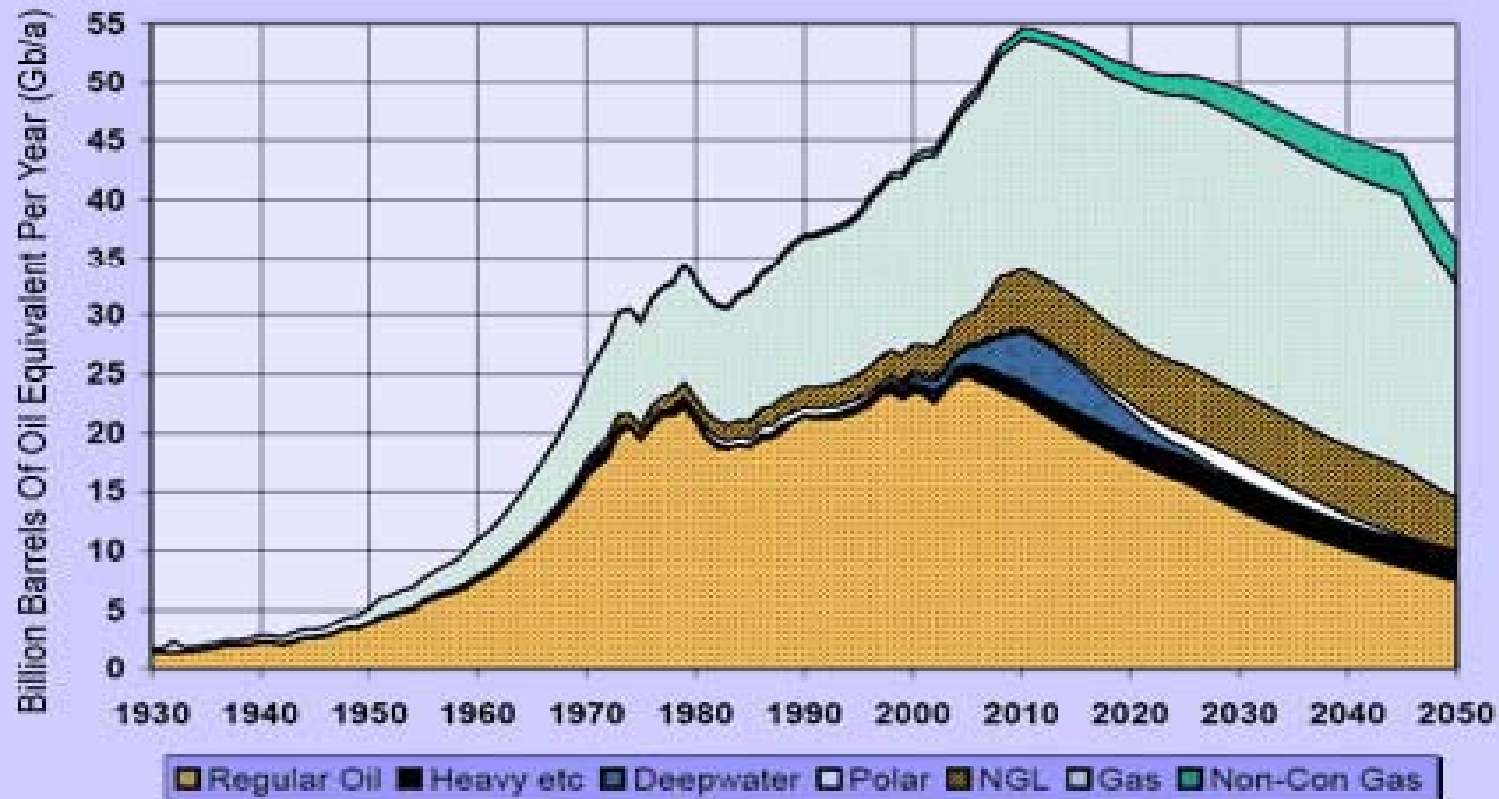
- Peak oil is the point at which we can no longer increase the amount of crude oil we extract .
- Globally petroleum production goes into irreversible decline.
- It is not when we have run out of oil, it is typically when we have used about half of all the oil in reserve.

When is the world Oil Peak expected?

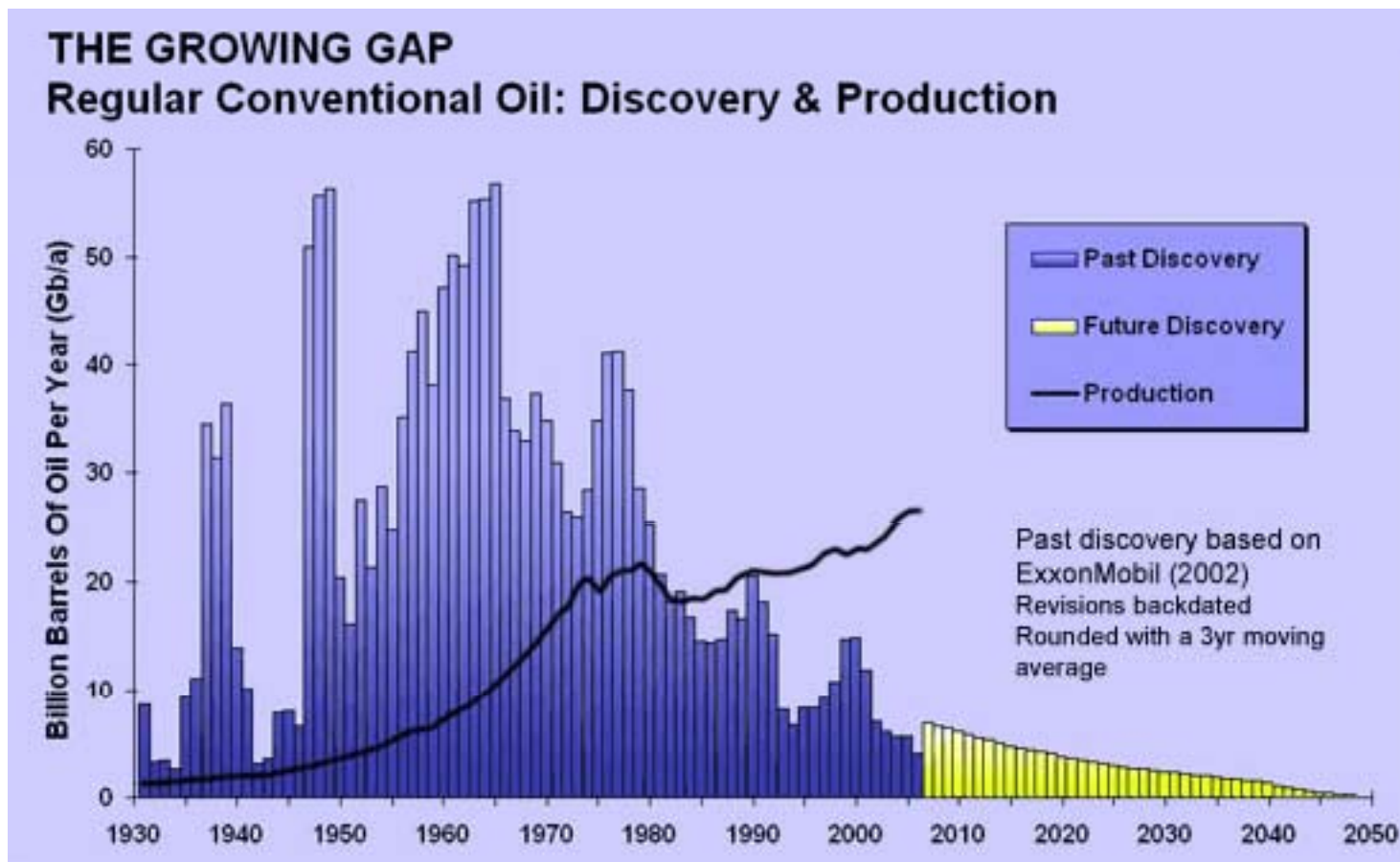


Gas is also expected to peak

Oil & Gas Production Profiles
ASPO 2006 Scenario



How can we predict this?



What does this mean for us?

- Demand will outstrip supply leading initially to large fluctuations in the price of energy and all associated commodities.
- Oil currently accounts for about 43% of the world's total fuel consumption, and 95% of global energy used for transportation.



First Actions of a new TT group



- Raising awareness of the need to take community action to rebuild resilience and reduce carbon.
- Connecting with existing groups in the community.
- Building bridges to local government.
- Connecting with other transition initiatives.



The next steps...

- Action groups are formed e.g. food, transport, energy, waste.
- These groups are initially formed by the whole community in a process called... the **Great Unleashing**... of the collective genius!



So what's new?



- Important awareness raising time
- The ideas are formed and owned by everyone in the action groups.
- There is a large support network locally and nationally.
- The process is promoted as a positive opportunity.

What might a TT look like?



- People work locally, travel less.
- Food is produced locally – diversity must increase, and transport reduce.
- Energy is produced from renewable sources.
- Consumption of ‘goods’ is vastly reduced.
- Resource efficiency is high.
- Housing is low energy.
- Take a holiday in the Chilterns, rather than Chianti!

Some Observations...



- We used immense amounts of **creativity** and **adaptability** on the way up the energy curve, and there's no reason for us not to do so on the way down.
- If we act **early** enough we can create a way of life that's more vibrant and in-touch with the environment than our lifestyle today.