



**Do you know
how to dispose
of hazardous
waste?**



 **recycle**
for Hertfordshire


WasteAware™
Hertfordshire Partnership

Electrical items



Electrical appliances form the fastest growing waste stream in the UK today. These items are becoming increasingly short-lived and replaced.

Waste Electrical and Electronic Equipment (WEEE) includes anything which has an electrical component, and some components can be hazardous, especially if not recycled at their end of life. The WEEE Regulations brought into force in 2007 have set targets for the recovery and recycling of electrical waste, to prevent such items from being sent for disposal. There are 5 main categories of WEEE, and are all recyclable in Hertfordshire. They are:



Fridges and freezers:

Contain chlorofluorocarbons (CFCs), a greenhouse gas, which must be removed before the various metals and plastics are recycled. In 2006, around 44,000 domestic fridges were recycled in Hertfordshire – that's from almost one in ten households!

TVs and monitors:

The cathode ray tubes (CRTs) behind the screens contain barium and must be safely removed. Following this, the remaining glass, plastic and metals are recycled. In 2006, 8% of Hertfordshire residents disposed of a TV or monitor – that's more than 88,000 units recycled!

Small domestic appliances:

This covers a broad group of electrical goods including kettles, toasters, hair dryers, work tools and vacuum cleaners. Plastics, metals and glass are separated from these appliances for reprocessing.

Large domestic appliances:

Includes washing machines, tumble dryers, dishwashers. They mainly consist of scrap metals, which are recycled along with the other materials.

Fluorescent lighting tubes:

Contain substances potentially harmful to health, like mercury and cadmium, which must be removed before other materials are recycled.

How do I dispose of my electrical items?



Almost all of Hertfordshire's Household Waste Recycling Centres accept all 5 categories of WEEE, and, as long as it is from your own home, you can recycle it there. Contact WasteAware on 08457 425 000 for advice.



For bulky items, contact your District or Borough Council to see if they offer a bulky waste collection service. Please note there will most likely be a charge for this type of collection.



Some companies offer an in-store take-back scheme, to recycle free of charge.

Did you know?

Energy saving light bulbs can be recycled with fluorescent tubes at the HWRCs



Construction and demolition wastes



Waste which is produced from DIY around the home and garden is classed as construction, demolition and excavation waste.

For example, bricks, rubble, plasterboard and soil. This waste is not classed as 'household' waste, and so should not be disposed of alongside your normal rubbish.



Did you know?
You can visit
www.wasteaware.org.uk
for further guidance



How do I dispose of construction and demolition waste?



A skip bag is a suitable option. These can be bought from DIY stores, and can hold up to a tonne of waste. For larger amounts, hiring a skip is a widely available option.



As an alternative, taking the waste to a reputable licensed private contractor will ensure legal disposal.



Construction and demolition waste arising from small DIY tasks around the home can be taken to your local

Household Waste Recycling Centre. However, the maximum concession at the sites means that anything more than a normal 'boot full' will not be accepted, and residents may only dispose of this amount once every 30 days. (As an example, this amount is the equivalent to 4 bags of rubble or 8 internal doors). Contact WasteAware for further guidance on 08457 425 000

TIP: Before starting DIY tasks around the home or garden, think about the disposal options available for getting rid of the waste and whether it will be disposed of properly. If hiring a private contractor, check that they are registered waste carriers through the Environment Agency (08708 506 506) to ensure the waste will not be flytipped.

Chemicals



Thousands of chemicals are produced and used throughout Hertfordshire every year, including weedkillers, lead paint and cleaner fluids.

Some household and garden chemicals are hazardous, and should not be disposed of with normal waste or down drains as they can run into water systems. Labels should be left on products so that they are easily identifiable when left unused.



Did you know?
Creosote, once used for varnishing fencing, is now a banned substance, and should no longer be used

How do I dispose of household chemicals?



Try contacting a specialist waste facility or contractor who are able to collect and dispose of the material, for instance, through the Yellow Pages.



The WasteAware helpline can advise on the disposal of small amounts of chemicals, some of which might be able to be disposed of at the Household Waste Recycling Centres.



Some chemicals are recyclable at Household Waste Recycling Centres, such as engine oil. Other materials such as domestic batteries and car batteries are also recyclable.



Petrol should be used up, for instance in a lawn mower. If this is not possible, some garages have a special drainage point for petrol.



Paint should not be disposed of in liquid form and should not be poured down drains or into water courses. Small amounts of paint will be accepted at the Household Waste Recycling Centres, but needs to be dried out first.

Asbestos



Asbestos is a naturally occurring mineral which has been used for many things in the past, mainly in construction. Asbestos is hazardous waste, due to the harm that the fibres can present to your health when airborne.

Before carrying out work involving asbestos or employing others to do so seek advice from your local council's Environmental Health Officer, the Health and Safety Executive or the Environment Agency.



Above, asbestos in its natural form

The two main forms of asbestos are cement bound (bonded), and fibrous (blue or brown) asbestos, and cannot be disposed of with your normal household rubbish. Bonded asbestos can be found in a range of items from cement bound sheeting in a shed to piping, whereas fibrous asbestos is commonly found in lagging and insulation boards.

How do I dispose of asbestos from my house?



For small amounts: Hertfordshire County Council offer collections of small household items of asbestos, such as a bath panel or a small water tank. Contact WasteAware on 08457 425 000 for advice.



For large amounts: Contact a private asbestos contractor. The Yellow Pages or other directories are good sources of information for finding a contractor to dismantle and dispose of asbestos material.

Asbestos **cannot be taken to Household Waste Recycling Centres.**

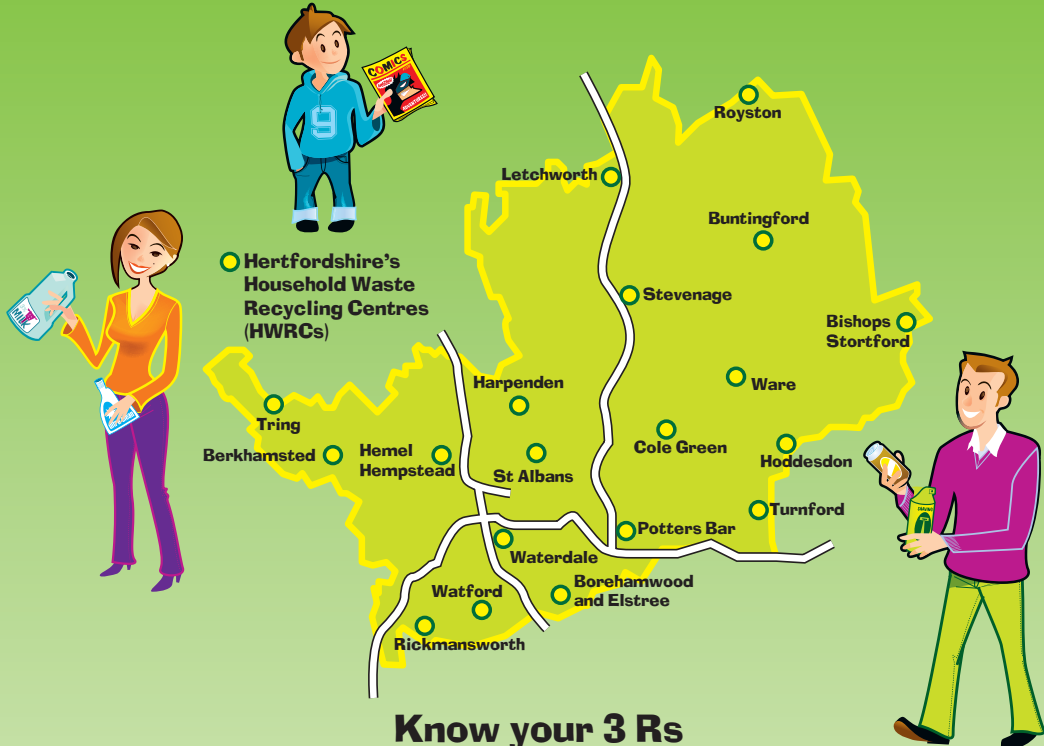
When asbestos is ready for disposal, it must be double bagged or placed in a suitably covered skip as a health and safety measure.

Did you know?

Due to its carcinogenic nature, it is illegal to re-use or recycle asbestos material for other purposes. Asbestos must be disposed of at a landfill site which is licensed to accept hazardous waste.



Remember, asbestos waste can only be transported by carriers licensed to transport hazardous waste and who will dispose of it at a suitably licensed site.



Know your 3 Rs

Next time you have something to throw away or **recycle**, stop and think if the item can be **reduced** in the future or if it can be **reused** in an innovative way.

It's only rubbish if you throw it away!

At Household Waste Recycling Centres householders can recycle paper, magazines, cardboard, green garden waste, glass bottles and jars, cans, plastic bottles, wood, textiles, engine oil, fridges, TVs, tyres, fluorescent lighting tubes, batteries, toner cartridges, metals and mobile phones.*

* Cole Green HWRC does not have facilities to recycle plastic bottles or mobile phones.

To find out more contact

WasteAware on 08457 425000 www.wasteaware.org.uk or your local council

Printed on recycled paper Printed: October 2007

This leaflet is produced by WasteAware – a partnership of all authorities in Hertfordshire.

 **recycle**
for Hertfordshire


WasteAware™
Hertfordshire Partnership